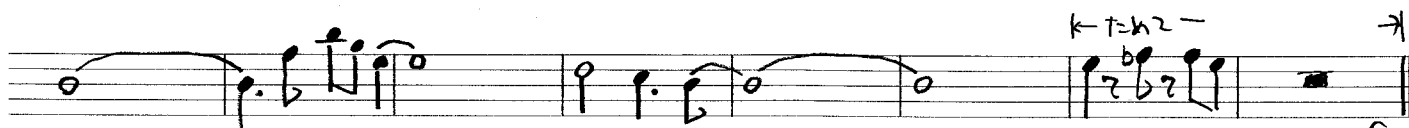
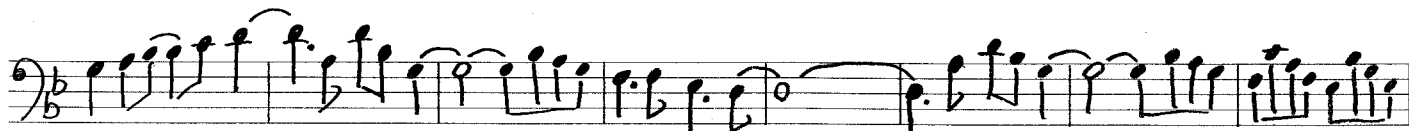




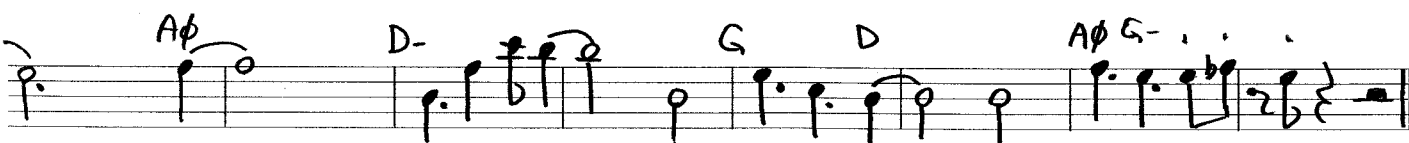
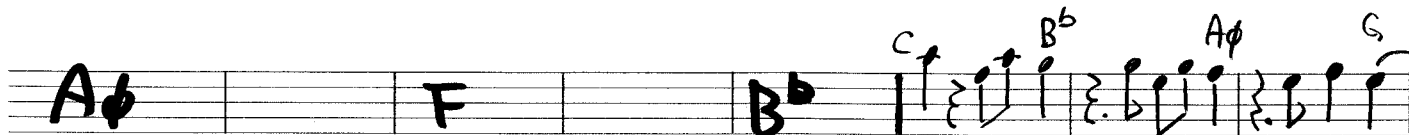
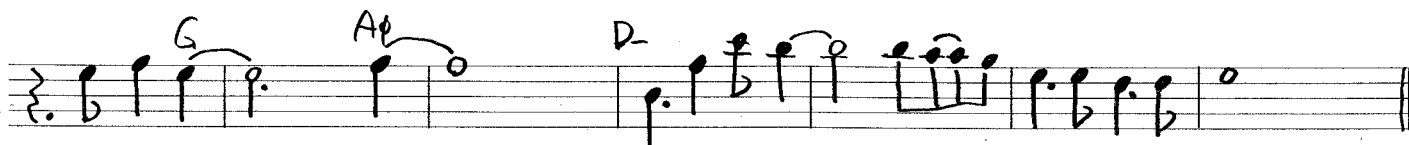
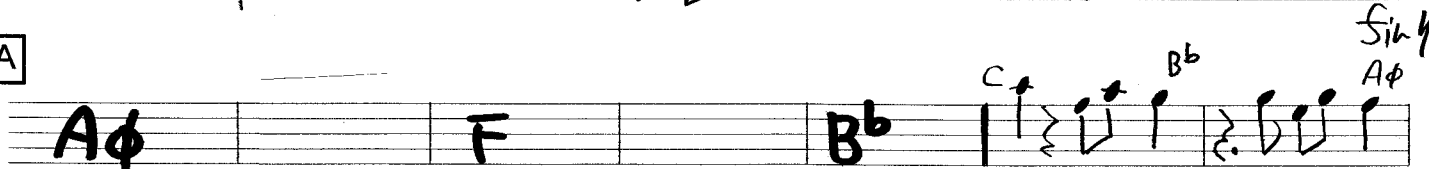
Vigilándote

Conjunto Clasico

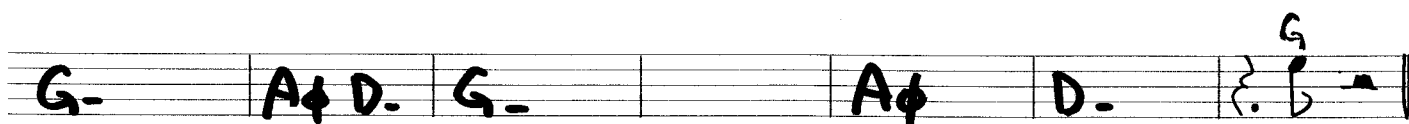
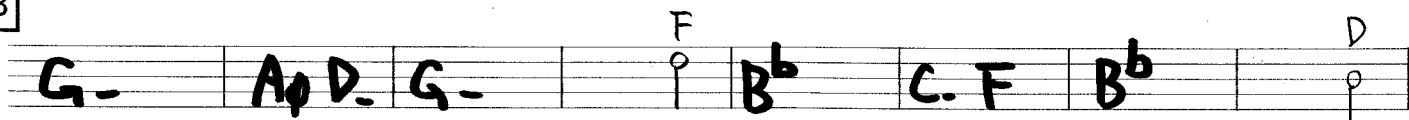
En VIVO.



A



B



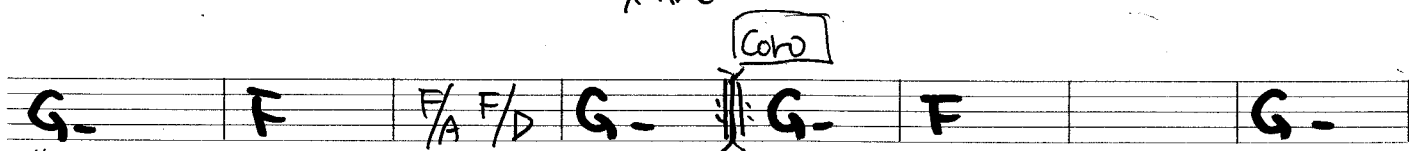
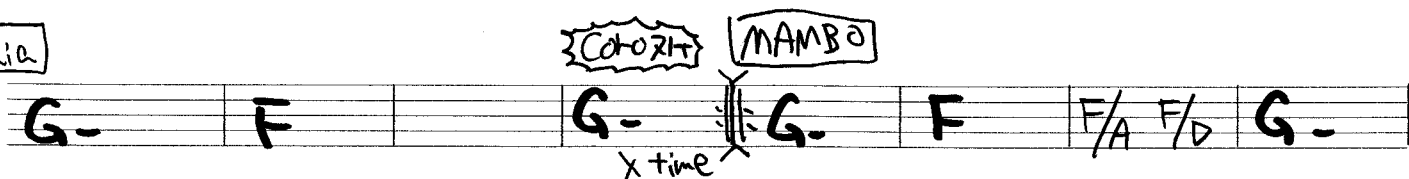
C



TP



Gwia



th, 18, 10°

Vigilándote en vivo (2)

Guia Coto 2/7 moña 1

7/8 G- F | G- xtime || G- F F/A F/D | 2 1 2 6 1

Guia Coto

|| G- F | G- xtime |

moña 2

G- F | G- | / |

Coto Guia Coto 2/7

G- F | G- 1st only (xxx) (xxx) | / |

moña 3 con Coto 5 2 5 -

G- F | G- | / |

Coto Guia

G- F | G- | / |

Coto

G- F | G- | p p # p || ~ |

D.C.

Empty musical staves for practice or continuation.